

THETFORD



INSTALLATION MANUAL

Refrigerator

N4000 series

For the Australian market

EN

Original Installation Manual

Contents

1	Introduction.....	2
2	Safety.....	3
3	Serviceability.....	7
4	Designation codes, drawings and models.....	7
5	Technical specifications.....	8
6	Before installation.....	11
7	Installation.....	22
8	After installation.....	26
9	Service & questions.....	27

1. Introduction

General

This is the installation manual for the Thetford N4000 series refrigerator. The manual is meant for qualified installers who will install the refrigerator in a caravan or camper.

Read the information and instructions carefully and follow them strictly to install the refrigerator safely and correctly.

Also read the warnings in the user manual before testing the refrigerator after installation.

This document is version 692275/0424-V06 of the installation manual.

Our policy is one of continuous development and improvement. Specifications and illustrations may change subsequent to publication.

Please visit www.thetford.com for the most recent version.

Symbols

The following symbols may be used in this manual:



Warning. Risk of serious injury and/or damage.



Caution. Risk of moderate injury and/or damage.



Attention. Important information.



Note. Additional information.



Video. Additional instruction video available.

2. Safety

The Thetford N4000 series is a range of absorption refrigerator suitable of running on three different power sources; ULPG, 12V DC and 240V. The refrigerator automatically selects the best power source.

Please read the safety instructions carefully before using the appliance.

General



Risk of serious injury through and electrocution or damage to the appliance.

- If the appliance is not installed in accordance with local and national regulations, rules and standards this will void the warranty and may lead to criminal prosecution.
- This appliance must be installed in accordance with AS/NZS 5601.2:2020 and local and national authorities.
- Electrical installation shall comply with the local authority requirements.
- Do not modify this appliance, unless the modification is authorised and carried out by the manufacturer or their agent.
- Incorrect installation or maintenance of the refrigerator may cause physical injury and/or damage to the refrigerator.
- Oxygen depletion system (ODS) is not required when installed to the current AS/NZS 5601.2 and the refrigerator is sealed from the habitation area (room sealed).

Installation



Risk of serious injury through burns, explosion, suffocation, electrocution, fire and poisoning or damage to the appliance.

- Only qualified and certified professionals are allowed to install the appliance and connect its electrical and gas components.
- Wear the correct Personal Protective Equipment during the installation. Also follow the applicable safety regulations.
- There are sharp edges and corners at the rear of the refrigerator and the installation frame. Always wear protection against cuts when installing the refrigerator.
- Install the refrigerator in accordance with the local/national laws.

- To avoid a hazard due to instability of the appliance, it must be fixed in accordance with the instructions.
- Use only genuine and approved parts and materials.
- Do not install this refrigerator fixed indoor cabin or other dwelling applications. This refrigerator is made for use in RV and towable applications.
- Do not install the refrigerator directly on carpet. Put the refrigerator on a metal or wood panel that extends the full width and depth of the refrigerator.
- Do not drill, cut or use excessive force on the refrigerator walls, except for screwing predefined positions. This may damage the vacuum insulation panels that have been foamed in.
- Do not screw into the refrigerator cabinet.
- The electrical connections and gas components must be installed in accordance with the latest technical regulations.
- Make sure that no sawdust, insulation, or other construction debris is on the refrigerator or in the enclosure. Debris can cause a combustion hazard and prevent the refrigerator from operating correctly.
- Never lift or handle a refrigerator at the power supply cables.
- When positioning the appliance, ensure the supply cord is not trapped or damaged.
- Install the electrical and gas connections in such a way that wires or tubing can't come into contact with hot or sharp parts.
- The refrigerator must be installed in a way that allows easy access for maintenance and repairs.
- Make sure the power plug is accessible so that the appliance can be disconnected from the supply after installation. If this is not possible or when the appliance is connected using fixed wiring a switch must be incorporated making it possible to disconnect the appliance from the supply.
- The performance of the refrigerator may be affected by adjacent heat sources such as an oven or stove. Make sure the refrigerator is completely isolated from its heat generating components through the correct use of baffles and panel construction.
- Make sure no equipment that produces sparks or flames is installed close to the cooling system.

Ventilation

- This refrigerator must use only Thetford designed and approved outside air intake and exhaust ventilation for correct and safe operation. Any other ventilation could cause lethal combustion exhaust fumes and/or explosive ULPG fumes to be in the living area.
- Pay close attention to current regulations on ventilation in the country of use. The installation must provide for adequate air supply for combustion to the burners, safe removal of combustion products and avoidance of accumulation of unburned gases.
- The fully installed refrigerator must allow proper and complete discharge of combustion gases. Combustion gases may contain carbon monoxide. Inhalation of this gas may cause tightness of the chest, dizziness and can lead to death.
- To cool the system and to supply the burner with sufficient airflow, make sure that there is always sufficient ventilation through the outside vents.

- This appliance must be installed in conjunction with Thetford's Flue Kit 636974.
- Make sure there is sufficient intake of fresh air for combustion.
- Make sure the bottom of the opening of the lower intake vent is even with or immediately below the floor level. This allows any leaking ULPG to escape to the outside and not to collect at floor level.
- Make sure vents cannot be blocked by the door or other objects. An insufficient air supply can result in incomplete combustion, the forming of carbon monoxide and reduction of cooling performance.
- If the lower vent is not on floor level, make sure all unburned gas will go to the outside (for example via a hole in the floor).
- In order to prevent the risk of fire in the event of uncontrolled leakage of the refrigerant system, make sure that the refrigerant charge per net room volume does not exceed 8 g/m^3 . Net room volume is defined as the gross room volume minus the volume of any product, equipment, or objects located in the living area. The refrigerant charge amount can be found on the serial label.

Gas

- The gas connection must be in accordance with AS/NZS 5601.2
- An isolation valve must be installed in accordance with AS/NZS 5601.2
- The refrigerator must be sealed from the living area of the caravan or motor home according AS/NZS 5601.2 and local authority requirements. Air for the burner must not be drawn from the living area of the caravan or motor home and combustion gases must not enter the living area.
- Never use rubber tubing to connect to the gas.
- Combustion gases must always be discharged upwards and to the outside of the caravan or camper.
- The gas pipe has to be installed free of tension. Always use two wrenches to tighten or loosen the gas supply line connections.

Electrical

- Do not bypass or change the refrigerator's electrical components or features.
- Never expose the refrigerator to water or moisture, or spray liquids near electrical outlets, connections, or the refrigerator components. Many liquids are electrically conductive and can cause a shock hazard, electrical shorts, and in some cases fire.
- The electrical connections have to comply with AS/NZS 3001:2022. All electrical components must be in accordance with the latest technical regulation.
- Do not locate multiple portable socket-outlets or portable power supplies at the rear of the appliance.
- The bridge D+ with LC+ can drain the battery, when cooling on DC/12V while the engine is not running.
- It is obligated to connect the AC wiring to a properly earthed power point.
- Cables, except heater cables, should not touch the burner box.
- Route the cables away from the appliance and other heat sources.

Commissioning



Risk of health issues or damage to the appliance.

- Do not switch on the appliance without first carrying out the visual and functional checks.
- If the appliance has been transported and/or been laid on its side, let it stay upright for 2 hours before switching on.
- The refrigerator only runs on ULPG. It does not run on natural gas or coal gas.
- Do not store or use gasoline or other flammable vapours and liquid in the vicinity of this or any other appliance.
- If you smell gas directly close the valve of the gas bottle, extinguish any naked flames, do not switch on any electrical devices or lighting, open the windows and leave the room. Then contact the Customer Service Department in your country.
- If after installation and commissioning, the appliance does not function correctly, it is recommended to isolate the appliance from the gas and electricity supply (turn off the gas and electricity supply) and contact the local Thetford Customer Service Department.
- A filter must be used when operating on Liquefied Petroleum Gas (LPG). The filter must be prescribed by a qualified technical person.
- The appliance may be connected to more than one source of energy.
- As the constant regulation of temperature can not be guaranteed, the refrigerator might not be suitable for proper storage of medications. Refer to the instructions included with the medication.
- Ensure that vent openings are not obstructed (e.g. by opening a door) and are able to vent freely.
- Opening the door for a longer periods can cause a significant increase of the temperature in the compartments of the appliance.
- Store consumables in suitable containers or wrapping in the refrigerator to avoid direct contact with interior.
- If the refrigeration appliance is left empty for a long period, switch of, defrost, clean, dry and leave the door open to prevent mould developing within the appliance.
- Do not use the drawer as a step or ladder.
- Any error messages coming from the refrigerator or shown on the master display, should not disturb the driver. For example: lights and/or sounds coming from the master display while driving.

Service



Risk of serious injury through burns, explosion, suffocation, electrocution, fire and poisoning or damage to the appliance.

- Never open, damage, bend, drop, weld, move, drill, puncture, or hit the cooling device at the rear of the refrigerator. The cooling system is pressurised and contains

substances harmful to health. The cooling system contains sodium chromate. The breathing of certain chromium compounds can cause cancer. The cooling system contents can cause severe skin and eye burns, and can ignite and burn with an intense flame.

- Only a qualified installation person is allowed to maintain, remove or repair (electronic or gas components of) the refrigerator.
- Use only genuine and approved parts and materials.
- Disconnect all energy sources before you remove the refrigerator or do servicing to the refrigerator.
- Never reposition or change the electronic or gas components or parts, unless stated otherwise in this manual..
- Never use naked flames whilst performing maintenance or repairs on gas lines or when checking fittings for leaks. Gas may ignite and cause an explosion resulting in serious physical injury and/or damage to the product.
- If the supply cord is damaged, it must be replaced by the manufacturer, its service agent or similarly qualified persons in order to avoid a hazard.

3. Serviceability

The installer of Thetford products is responsible for correct installation according to the Thetford installation instructions to ensure the functionality and serviceability of the product.

In terms of serviceability, this means that a dealer or authorised Thetford service partner must be able to remove and re-install the Thetford product within the time that is allowed according to the Thetford time-list, using standard tools and equipment.

This is to claim any warranty during the warranty period after the purchase date.

In case of any queries on this subject, a Thetford local service representative can be contacted for additional support related to the installation of the product.

4. Designation codes, drawings and models

Each product has a specific identification code, the designation code. The designation code can be found on the data badge. See chapter Service & questions for the location of the data badge. The different positions of the code stand for different variations of the refrigerator. In these instructions, the designation will be used as reference.

Table 1: Designation example

N4175	A	– Z	166	W	195	R	52	X
Fridge model	Fridge version	Market	Type of foamed cabinet	Type of cooling unit	Type of door	Hinge position		Type of communication

Table 2: Available drawings and models

Model*	2D drawings**	3D files**
N4141	LE1602	LE1603
N4175	LE1604	LE1605
N4208	LE1606	LE1607

* Not all models are available for the Aftermarket (A-market in Table 1: Designation example)

**The 2D drawings are available upon request, 3D files are only available for the professional builder.

5. Technical specifications

Refrigerator specifications

Model	Dis-play	Total vol- ume (L)	Vol- ume cabi- net (L)	Vol- ume frozen food comp. (L)	Energy consumption				Net weight (kg)
					(kWh/24h)		(g/24h)		
					by 16°C	by 32°C	by 16°C	by 32°C	
N4141	LCD	134	118.4	15.4	2.8	5.5	290	540	38
N4175	LCD	166	135.5	30.3	2.7	5.4	400	600	45
N4208	LCD	199	155.9	42.9	2.4	6.2	300	550	53

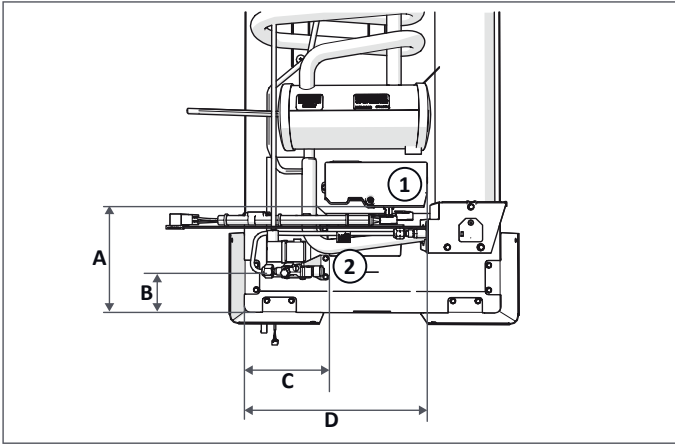
Above volumes per AS/NZS 5263.1.5:2019, effective 1st Sept 2021. The energy consumption is based on the AS/NZS IEC 62552.3:2018 standard.

Electrical specifications

The refrigerator is designed to run on ULPG, 12V DC or 240V AC.

The connection points are located at the rear of the refrigerator.

Table 3: Position connection points



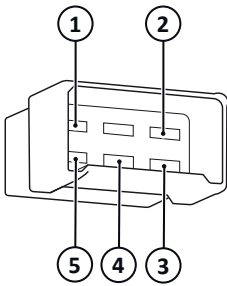
1. Electricity connection point
2. Gas connection point

Model	Electricity		Gas	
	A (mm)	D (mm)	B (mm)	C (mm)
N4141	169	288	75 ± 9	137 ± 6
N4175	169	288	75 ± 9	137 ± 6
N4208	165	180	77.5	166.5

Table 4: Specifications for connecting AC

AC	240V
Operating window	220-240V/50Hz
Fuse	2A slow

Table 5: Specifications for connecting DC

DC	12V
Power requirement 12V high current	12V- 14.4V at the fridge
Cable dimensions (Cable thickness vs cable length)	<ul style="list-style-type: none"> ▪ 4mm² = < 2.5m ▪ 6mm² = < 3.5m ▪ 10mm² = < 6m
Fuse high-current	25A
High current supply	red cable (+) and white cable (-) for heating element. Only switched if signal on D+
Fuse low-current	1.1A
Low current supply	purple (+) and black (-) for electronics
D+ signal	orange, + when engine runs
If D+ signal is not present on vehicle	No cooling on DC/12V. Possible solution: bridge D+ with LC+
<p>Layout of the DC power connector</p>  <p>STOCKO VV2028.110 G PA6 V2 Cable length: 250 mm</p>	<ol style="list-style-type: none"> 1. white 2. black 3. purple 4. orange 5. red

Due to sophisticated AC regulation it is difficult to perform a power measurement. Power measurement is only possible with a professional power analyser.



D+ is an “engine run” signal that is only present while the engine of the tow vehicle is running. Additional information with recommended wire schemes is available upon request.

Gas specifications

Gas type	For ULPG use only
Diameter gas tube	3/8 inch
Gas pressure	2.75kPa
Injector size	LP15

6. Before installation



Read the applicable instructions in chapter Safety first.

Content of the box

For the single-piece packaged appliance, check the content:

- Appliance
- Shelves, drawers and bins
- Installation package
- User manual
- Installation manual



If something is missing, please contact your dealer.

Installation dimensions



Images may differ from your model.

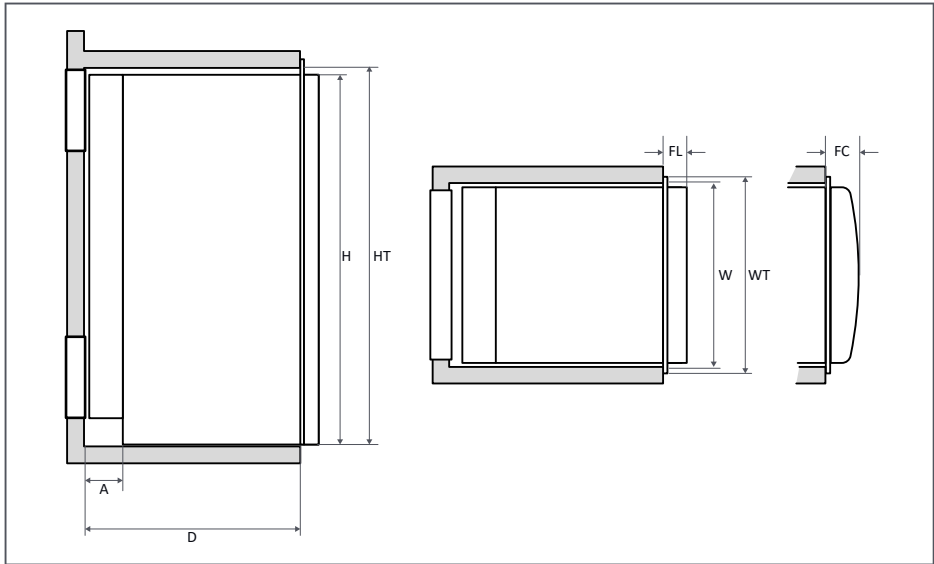


Table 6: Mounting dimensions

Model	HT (mm)	H* (mm)	WT (mm)	W** (mm)	D (mm)	FL (mm)	FC (mm)	A (mm)
N4141	1510	1504	438.5	427	530 - 570	49	-	130 - 170
N4175	1255	1249	545.5	534	566 - 606	-	84	130 - 170
N4208	1470	1464	545	534	566 - 606	-	84	130 - 170



The indicated dimensions refer to the cabinet enclosure of the appliance.



* Height is including feet (8mm) for models N4175 and N4208. Model N4141 has no feet. For this model, maintain a minimum distance of 15mm from the floor to prevent the door from scratching the floor.



** If there is more than 13 mm of clearance between either side of the refrigerator and the wall, fill the space with fibreglass insulation or add a baffle to eliminate the excess clearance.



When a model N4141 refrigerator is put next to a wall, it is important to keep a minimum distance of 15mm between the door and the wall, to be able to open the door completely.



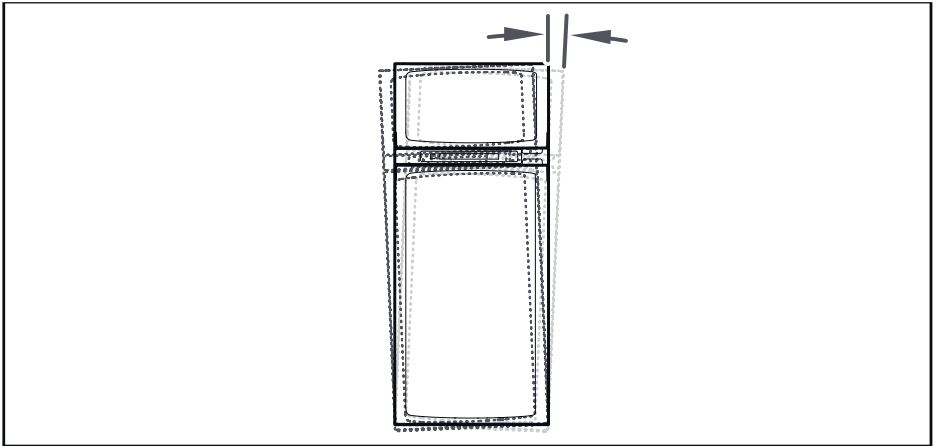
For PVC tubes and/or water tubes within the sealing space, Thetford recommends using a heat shield or creating a minimum distance of 35mm from the exhaust



For flat door models there is also the possibility to build in the refrigerator in such a way that the refrigerator door is aligned with the front of the installation cabinet.

Preparations

Make sure the refrigerator can be installed on a flat and stable floor. For optimum performance the refrigerator must be level. Performance is still guaranteed within the limit of ± 2.5 degrees.



Notice that the tilt of the chassis or floor can already be a few degrees.



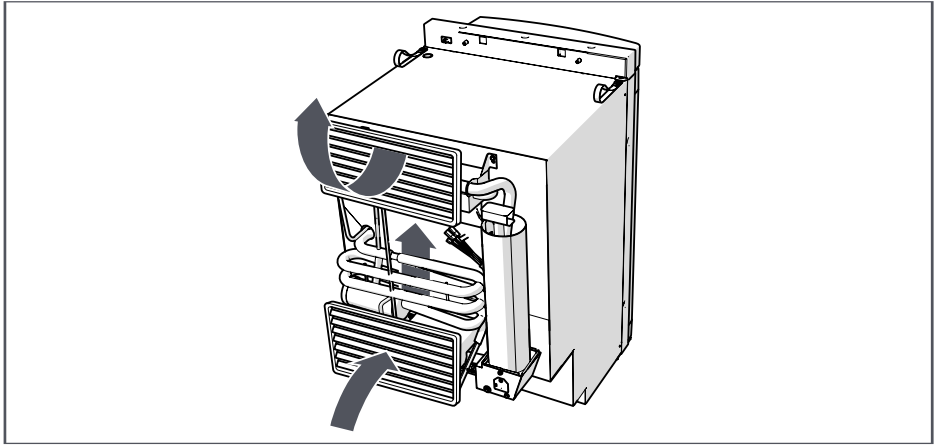
Ensure that the furniture panelling is able to handle the forces created by the connection.

Ventilation

The refrigerator performance depends on good ventilation through two vents in the wall of the vehicle. Cold air comes in through the lower vent, passes the cooling unit and leaves hot through the upper vent.



Images may differ from your model.



Vents are available at authorised local Service Centres. For further instructions, see the installation instructions of the vents.

Vent size

Use the proper vents for your refrigerator model.

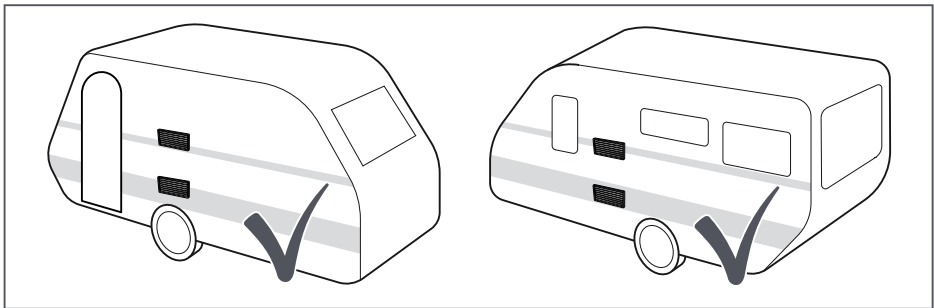
Model	257 x 432mm	281 x 523mm
N4141	X	-
N4175	-	X
N4208	-	X

Vent position

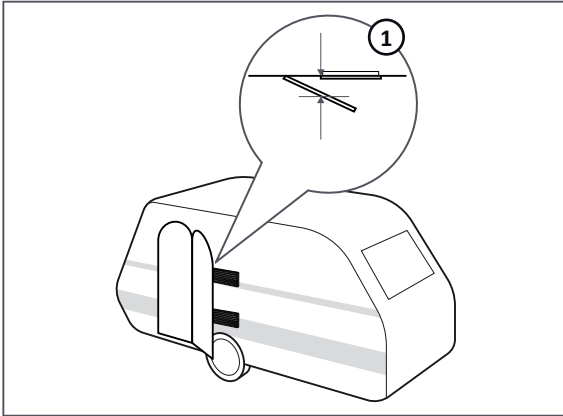
The recommended installation is when the vents are not covered.



See Table 2: Available drawings and models for the applicable 2D-drawing for more detailed installation information.

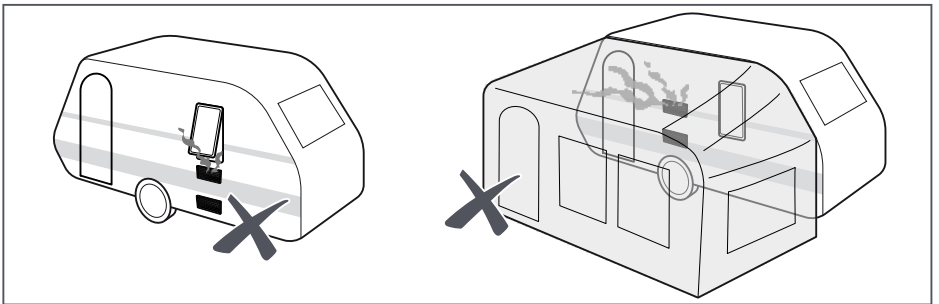


When installation is next to the caravan door, make sure that there will be at least a 25mm distance between the vents and the door to ensure any combustion products do not enter the caravan.



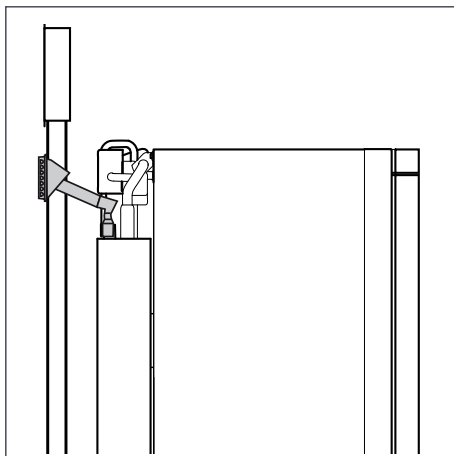
1. Min. 25mm

Make sure that combustion gases can not enter the living area.



Flue kit

Combustion gasses will be extracted via the independent flue kit directly to the outside. The independent flue kit is sold separately (part number 636974) and should be installed according the included installation manual (part number 636976A).

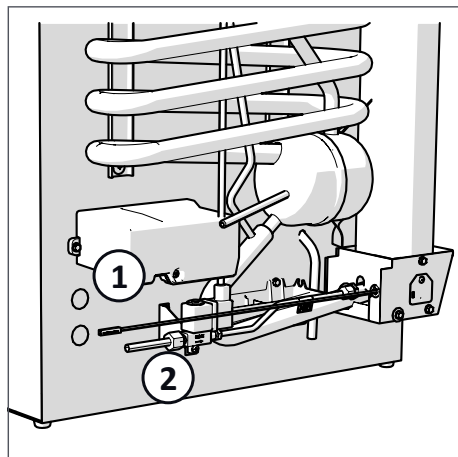


Power supply

The refrigerator is designed for powering by ULPG (propane, butane or a mixture of these both), 12V DC or 240V AC.

Connection points

The connection points for gas and electricity are located at the rear of the refrigerator.



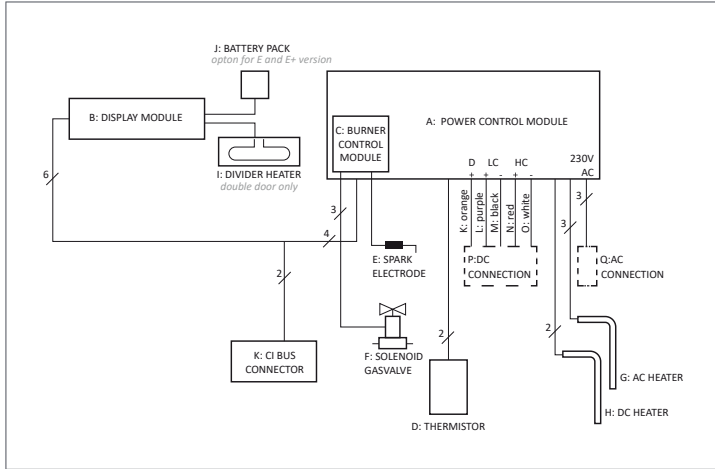
1. Electricity connection point
2. Gas connection point



For detailed information about the type and dimensions of the inlet of the gas tube technical drawings are available upon request.

Wiring diagram

To connect AC and DC power supply use this diagram:



K: orange

L: purple

M: black

N: red

O: white

P: DC connection

Q: AC connection



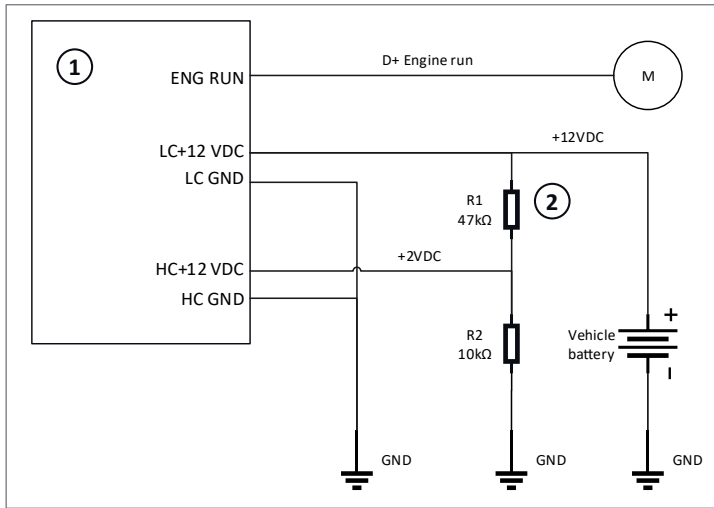
Refer to the sticker on the refrigerator for the complete wiring diagram.



See Table 2: Available drawings and models for the applicable 2D-drawing for connector set-up.

2-way option

When the 2-way option is connected, the 12V DC power supply will be deactivated and only the gas and AC power supplies are available. To use the 2-way option, connect the wiring according to this diagram:



1. 12V connector to the Power Control Board (provided by Thetford)
2. Build a cable bridge (to be done by the installer)

Door panel

To match the refrigerator with the interior, a door panel can be installed.



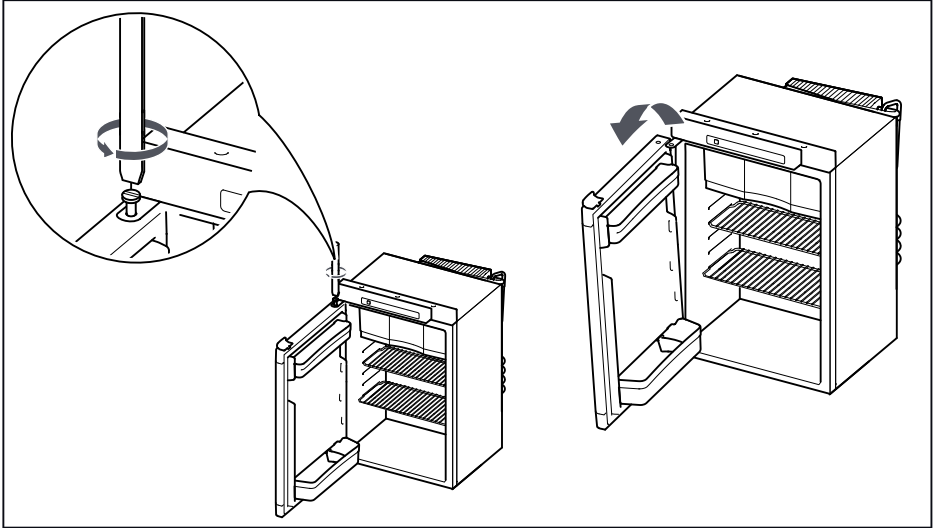
Images may differ from your model.



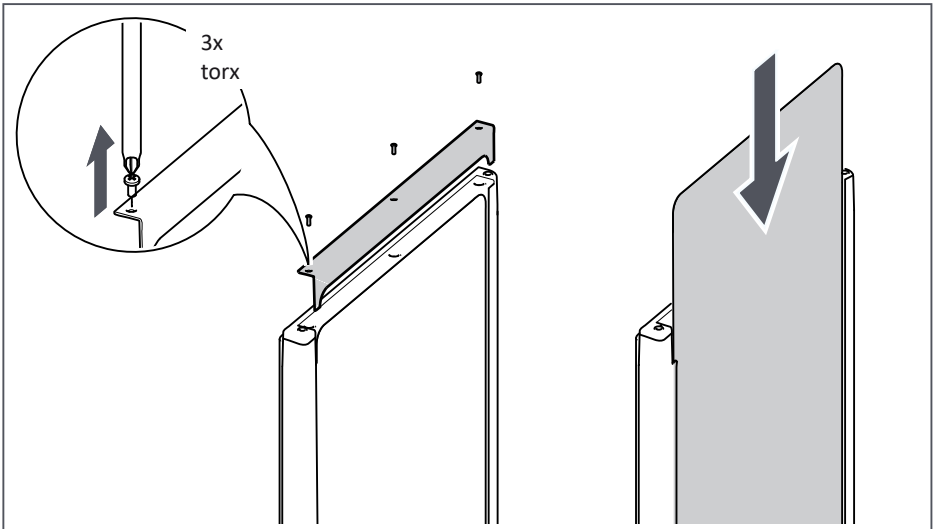
The door panel for a framed door should be fitted before installing the refrigerator.

For N4175 and N4208

- Demount the door from the refrigerator.



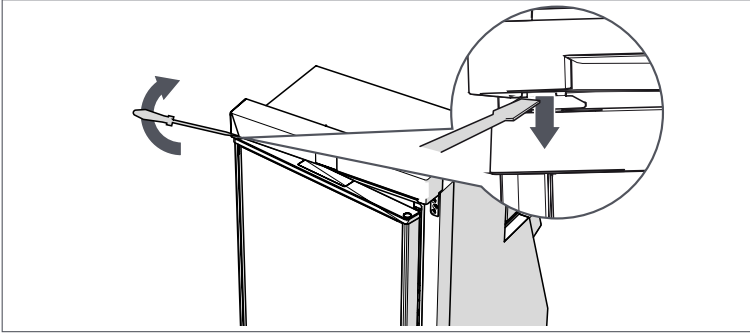
- Remove the panel retainer.
- Slide the door panel into the holder.
- Install the panel retainer.



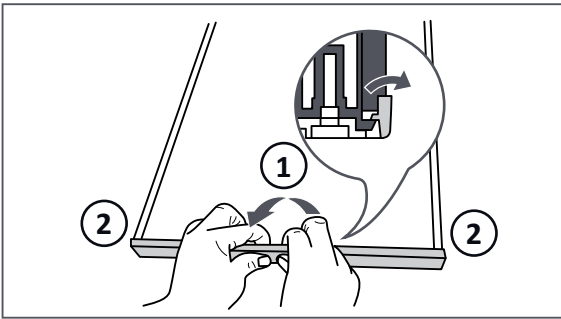
- Reinstall the door in reverse order.

For N4141

- Remove the cabinet door.



- Remove the panel retainer.



1. Pull and rotate the panel retainer in the middle.
2. Pull and rotate the panel retainer on the left and right.

- Slide the panels in the door and the drawer (A).
- Click the panel retainer(s) in place (B).

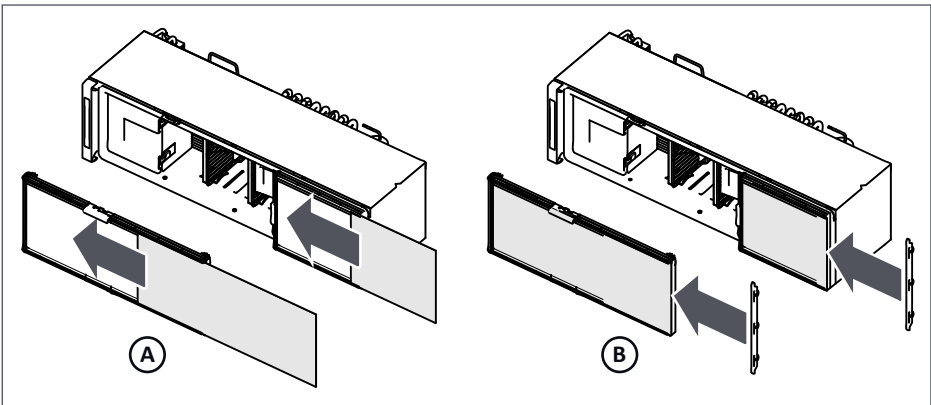


Table 7: Panel sizes

Model	Door type	Thickness (mm)	Panel size (mm)
N4141	Flat cabinet	2.7	H 950 x W 393
		2	H 950 x W 394
		1.5	H 950 x W 395
	Flat drawer	2.7	H 453 x W 393
		2	H 453 x W 394
		1.5	H 453 x W 395
N4175	Curved cabinet	3	H 876 x W 469
	Curved compartment		H 275 x W 469
N4208	Curved cabinet	3	H 991.3 x W 469
	Curved compartment		H 371.9 x W 469



Measurements are based on form-retaining material.

Door conversion

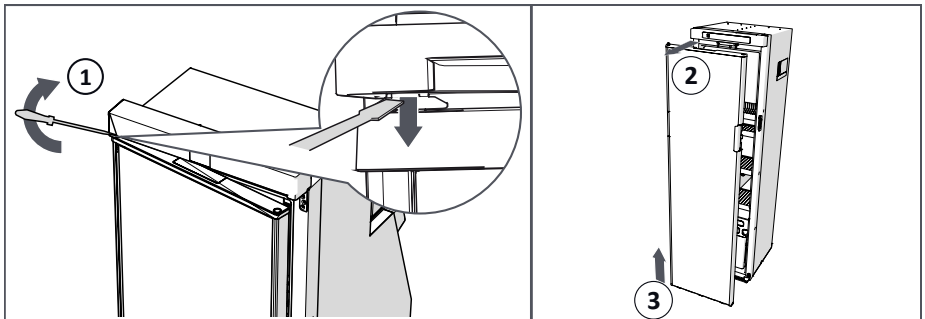
If needed the side in which the refrigerator door opens can be reversed.



Images may differ from your model.

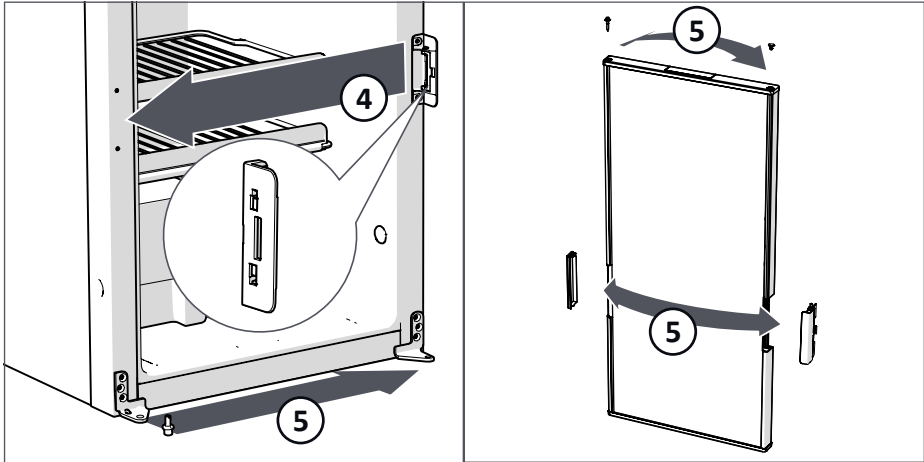
N4141

- Open the door a little and push the hinge pin down with a screwdriver (1).
- Pull the hinge corner to the front (2).
- Lift the door (3) out of the hinges.



- Move the lock (4) on the refrigerator from one side to the other.

- Move the hinges, hinge pin, hinge hole plug, the handle (5) and the travel lock (if equipped) on the door, from one side to the other.
- Mount the door back on the hinges.



For more information on how to convert the door: <https://go.thetford.com/service/door-conversion/N4141-N4142>



For all other models

To convert the door(s) on the other models, a Thetford door conversion kit is necessary. Refer to the installation instructions supplied with the kit.

For more information on how to convert the door: <https://go.thetford.com/service/door-conversion/N3000-N4000>



7. Installation



Read the applicable instructions in chapter Safety first.

Connecting gas

- Connect an 3/8" gas pipe to the gas connecting point of the refrigerator.



The gas inlet connection is a 5/8"-18UNF-2A thread.

Connecting electrical supplies

- Use a standard 10 Amp wall plug to connect the AC power supply according to the sticker on the refrigerator and the values mentioned in Technical specifications.
- Connect the DC power supply according to the sticker on the refrigerator and the values mentioned in Technical specifications.

Installing



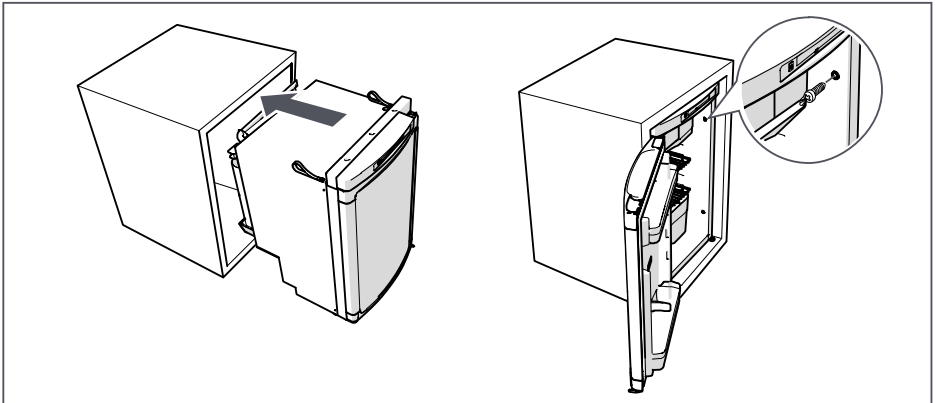
Images may differ from your model.

- Slide the refrigerator to the back of the furniture.



The foam tape at the back of the installation frame is decorative seal only.

- Fix the refrigerator in place with the screws, using the pre-drilled positions in the cabinet.



- Use the white caps for finishing.



Do not screw into the refrigerator cabinet.

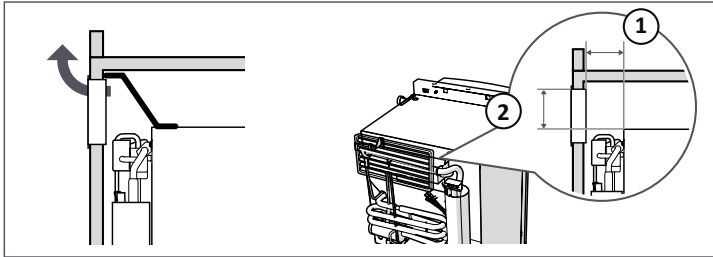


The refrigerator has fixating points both on the left and right side of the cabinet.

Installing vents

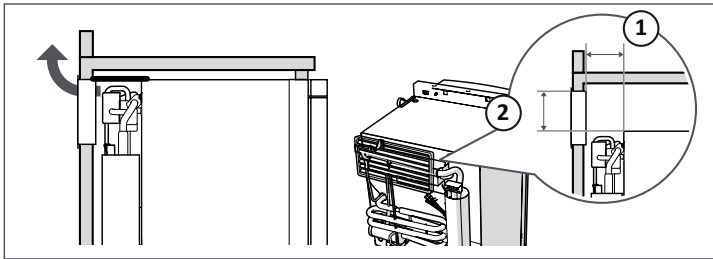
Upper vent 257 x 432mm

- Option 1 (preferred): Install the upper vent in the wall of the vehicle at the top of the refrigerator.



1. $135 \pm 5\text{mm}$
2. Min.
 130mm

- Option 2: Install the upper vent in line with the top of the refrigerator.

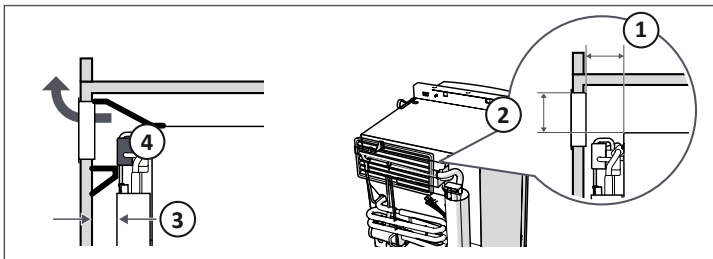


1. $135 \pm 5\text{mm}$
2. $0 \pm 5\text{mm}$

- Option 3: Install the upper vent with a baffle (3) from the bottom of the condenser (4).

Baffle dimensions:

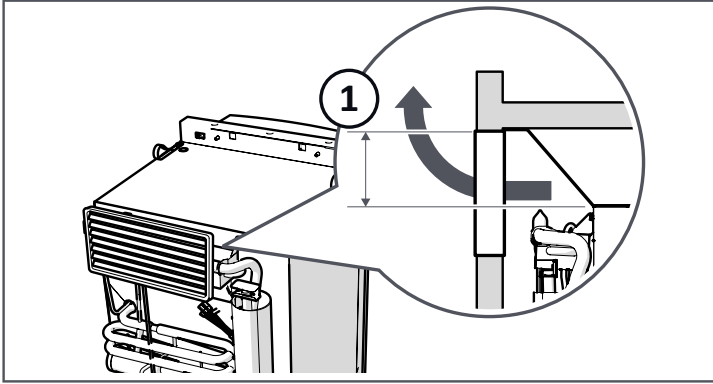
- If (1) is 140-150mm, then baffle (3) should be 30mm.
- If (1) is 150-160mm, then baffle (3) should be 40mm.
- If (1) is 160-170mm, then baffle (3) should be 50mm.



1. 140-170mm
2. $> 70\text{mm}$

Upper vent 281 x 523mm

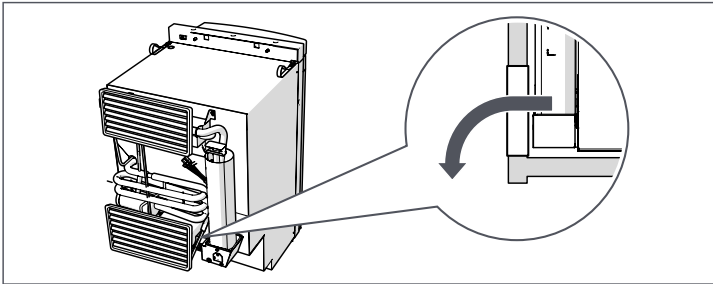
- Install the upper vent in the wall of the vehicle at the top of the refrigerator.



1. Min.
175mm

Lower vent (all sizes)

- Install the lower vent in the wall of the vehicle on the floor level behind the power board.



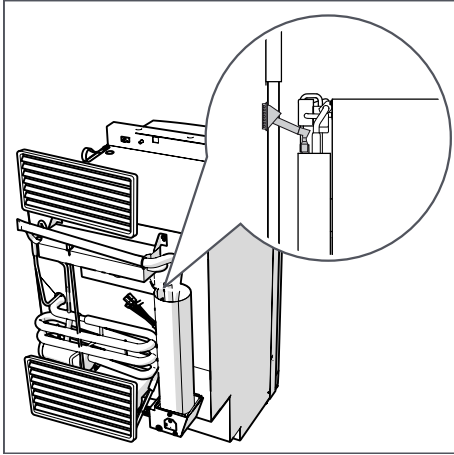
This vent is also used for periodical maintenance or repairs of the refrigerator.

Installing flue kit



Images may differ from your model.

- Install the flue kit according to the installation manual of the flue kit itself.



8. After installation



Read the applicable instructions in chapter Safety first.

Visual checks

Check if:

- All packaging materials have been removed.
- Sealing has been applied correctly.
- Drain hose is not pinched or blocked, has free access to the outside and the correct angle to drain.
- Ventilation openings are not blocked.
- Flue exhaust is present and installed properly.
- Electrical cables are not pinched or damaged.
- Electrical cables are not routed close to heat sources (such as hob, oven or heater) and ignition sources.
- Electrical connectors are seated correctly.

Functional checks

Check if:

- Appliance can be switched on/off.
- All piping and connections do not leak.
- Appliance can operate on gas, and if the gas pressure is according specification.
- Refrigerator cools correctly, this means at 25 degrees Celsius ambient temperature the empty cooling cabinet should reach <5 degrees Celsius in 8 hours.
- Light (if present) in the cooling compartment is working.
- Vegetable bins can be removed from the appliance.
- Door can be closed correctly.

9. Service & questions



Read the applicable instructions in chapter Safety first.


Service

Before any service work is started, the appliance should have been left to cool and be disconnected from both the gas and electrical supplies. After each service the appliance must be checked for electrical safety, gas soundness and must be sealed from the living area.

Questions

If you have questions about your product, parts, accessories or authorised services visit <https://www.thetford.com.au>.

If you contact an authorised local Service Centre in your country, provide the details of the model and serial number plus the date of purchase.

THETFORD	
Model No <input type="text"/>	Type <input type="text"/>
Serial No <input type="text"/>	Climate Class <input type="text"/>
 	

Warranty

For our warranty clause, please refer to the conditions mentioned on <https://www.thetford.com.au>.

EUROPEAN HEADQUARTERS

Thetford B.V.
P.O. Box 169
4870 AD Etten-Leur
The Netherlands

T +31 76 504 22 00
F +31 76 504 23 00
E info@thetford.eu

UNITED KINGDOM

Thetford Ltd.
Unit 6
Brookfields Way
Manvers, Rotherham
S63 5DL, England
United Kingdom

T +44 844 997 1960
F +44 844 997 1961
E infogb@thetford.eu

GERMANY

Thetford GmbH
Schallbruch 14
D-42781 Haan
Deutschland

T +49 2129 94250
F +49 2129 942525
E infod@thetford.eu

FRANCE

Thetford S.A.R.L.
Parc BUIROPLUS / Bâtiment 6
18, Boulevard de la Paix
CS 80008
95895 Cergy Pontoise Cedex
France

T +33 1 30 37 58 23
F not available
E infof@thetford.eu

ITALY

Thetford Italy c/o Tecma s.r.l.
Via Flaminia
Loc. Castel delle Formiche
05030 Otricoli (TR)
Italia

T +39 0744 709071
F +39 0744 719833
E infoi@thetford.eu

SPAIN AND PORTUGAL

Mercè Grau Solà
Agente para España y Portugal
C/ Castellet, 36 bxs 2a
08800-Vilanova i la Geltrú
Barcelona
España

T +34 938 154 389
F not available
E infosp@thetford.eu

SCANDINAVIA

Thetford Scandinavia
Bangatan 6
521 43 Falköping
Sverige

T +46 31 336 35 80
F not available
E infos@thetford.eu

AUSTRALIA

Thetford Australia Pty. Ltd.
130-132 Freight Drive
Somerton VIC 3062
Australia

T +61 3 9358 0700
F not available
E infoaus@thetford.com.au
www.thetford.com.au

CHINA

Thetford China
Rm. 1207, Coastal Building
(East Block)
Haide 3rd Road, Nanshan District
Shenzen, 518054
China

T +86 755 8627 1393
F +86 755 8627 1673
E info@thetford.cn
www.thetford.cn